

Magna-Grab

MAGNETIC

No-Touch TOOL

FOR USE IN MULTIPLE
APPLICATIONS



HandSafetyTools.com



Enables safe
maneuvering of
steel objects



Facilitates
long-reach object
retrieval



Serves as portable
tagline anchor point

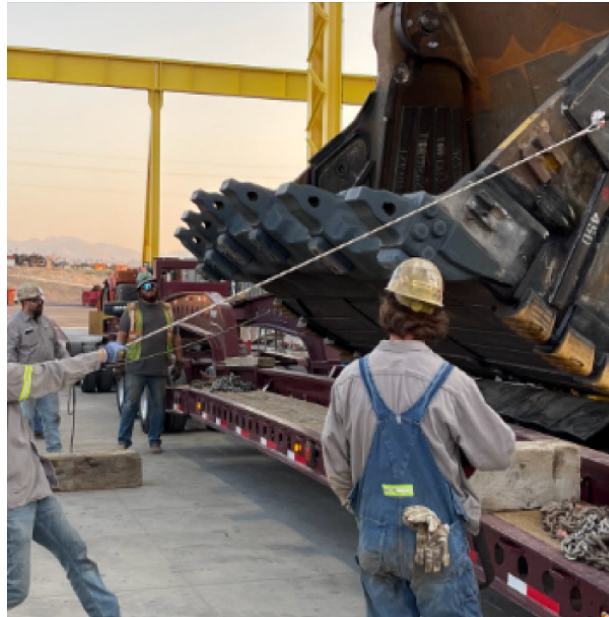
MAGNETIC GRIP FORCE
500 LBS.



Magna-Grab

PROVIDES DURABLE POINT
TO ATTACH TAGLINE

SUPER MAGNET
ENABLES STRONG
GRIP BUT EASY
TO ATTACH AND
REMOVE



A portable magnetic tagline anchor point for suspended loads that don't offer an ideal attach point or when a quick "add on" control point is needed. MAGNA-GRAB is also an amazingly versatile long reach, confined space retrieval tool for dropped objects. It can also be used as a holding and positioning hand tool. Visit our website for complete tool information.

MADE IN THE U.S.A.



800.674.9224

Tech SPECS

Magna-Grab

DESIGN



- Lightweight and strong
- Magnetic grip force of 500 lbs.
- Compact
- Versatile
- Rugged and durable
- Easy to attach/release
- Stainless steel eye bolt
- Crafted from aluminum

PART NUMBER	PART WEIGHT	PRODUCT DIMENSIONS
MG001	3 lbs.	8" x 4"

